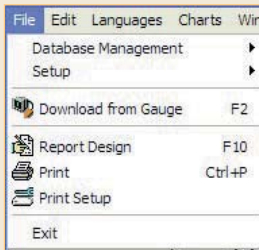


# Inspection Management Software

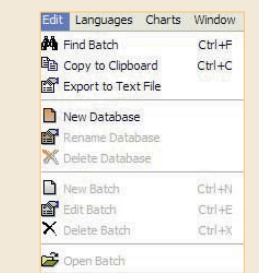
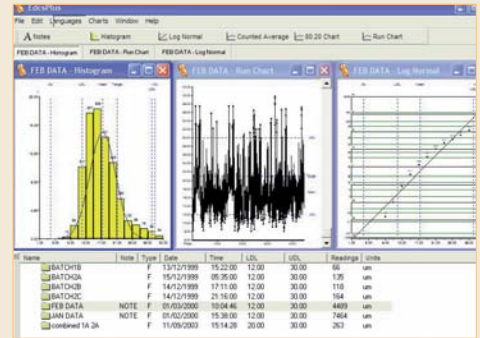
Elcometer provide a complete range of software packages designed for use with our gauges and other manufacturers' equipment. These software packages are either supplied with the appropriate instruments or can be downloaded from our website.

## Elcometer EDCS+ Coatings Management Software

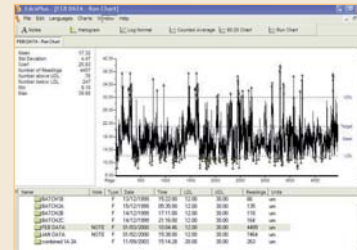
EDCS+ is a software program designed for the Coating Inspector and is an ideal tool for management of data collected by a wide range of Elcometer gauges. EDCS+ takes Coatings Management Software to a new level. A simple to use software program that allows the operator to access professional inspection results and generate specialised reports for the customer or for ISO reports. EDCS+ is so versatile - just look at some of the things that you can do with your data.



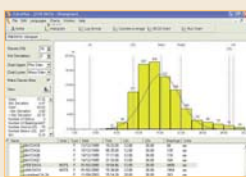
- Archive your data as you want to - organise your data as you need to see it - rename batches, set up folders for different customers
- Design your own reports to meet your corporate identity - add your company logo, photographs of the product under inspection, include summary data, etc



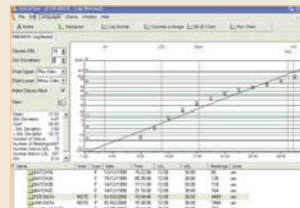
- Edit your data as you require
- Copy to clipboard and paste it into your own document
- Export data as a file to include in spreadsheet reports
- Create, delete and rename databases
- Open, create, edit and delete individual batches



Run Chart - explore the uniformity



Histogram - how spread out is your data from the target thickness?



Log Normal - how normal is your data?

Model	Description	Part Number
Elcometer 960	Elcometer EDCS+ Coating Management Software	T96016488

## Elcometer Datastat SPC Software

This powerful software package provides the User with the means to control their production process. Through continuous inspection Datastat will help you to reduce re-work and scrap levels - increasing your profits and quality.

- Data Entry
- Capability Studies
- Database Management
- Process Improvement Reporting
- Charting
- Upgrade Paths
- Software Versions
- Customisation

See pages 198-201 for further information.

